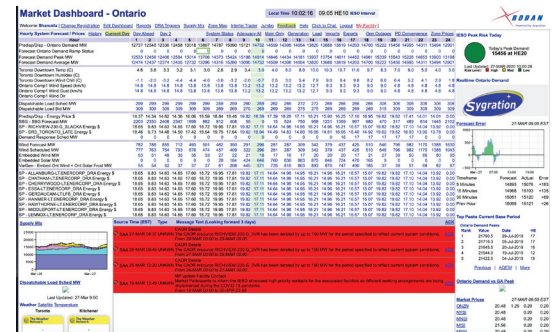


Market Dashboard

Dashboard Console

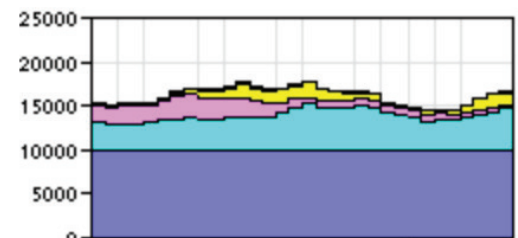
The main console combines real-time, historical, and forecast data on one screen. Data updates automatically, and alerts are generated both visually as well as with audio by using a computer speech-synthesis. It is also a gateway to more detailed information and live reports.



Supply Mix

The supply mix report consolidates historical generation supply, market demand, interchange transactions, and market price graphs on one screen. Detailed generation, price, fuel, and import/export data are shown to the right of the main charts. It is updated dynamically by moving the mouse over the charts and clicking on any hour of interest.

Supply Mix



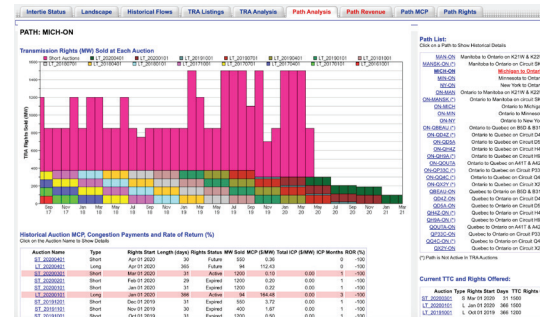
Jumbo Screen

The jumbo market status screen provides a large view of key metrics of the Ontario electricity market, including the current price and demand information. It is ideal to showcase the market status on a dedicated computer or large screen so it can be viewed quickly by several people.

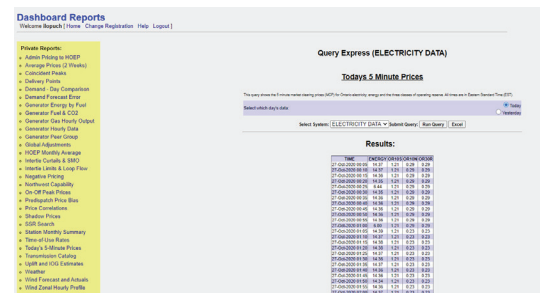
IESO Time: 2020/03/27 15:40 EST

Market Demand (5-Min)	14,812 MW	▲
Ontario Demand	12,959 MW	▼
HOEP	\$10.58 /MWh	▼
5-Min MCP	\$14.04 /MWh	▼
Uplift Estimate	\$1.00 /MWh	▲

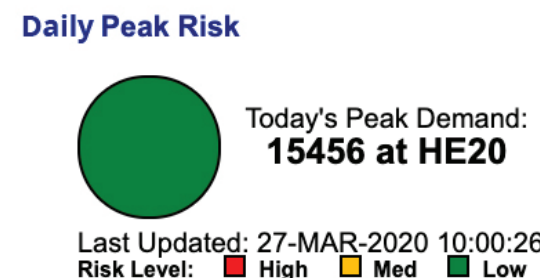
The intertie trader provides real-time and historical analysis of the electricity interconnections between Ontario and its neighbours. There are nine screens that include both historical, real-time, and forecast prices for energy flow on these interfaces. Interface prices and flows (where available) include published information from external markets. There are several screens dedicated to Ontario's Transmission Rights Auction (TRA) where participants bid to own Transmission Rights across specific paths for a period and receive compensation when congestion occurs on those paths. A full history of the paths and TRA rights are provided, including historical congestion data, auction pricing data, and return on investment analysis.



Dashboard reports are provided to Market Dashboard subscribers. These reports are a collection of useful data that allows subscribers to execute complex data queries directly against the Market Dashboard data warehouse. Using the Market Dashboard query express engine, users can view the data online or export the data into Microsoft Excel.



Provides a quick view of peak demand conditions, allowing users to identify the risk of a market peak on any given day.



Rodan Energy is a leading North American energy management company delivering valuable solutions to large commercial and industrial energy users as well as power distribution and generation companies.

Our expertise in metering and power systems, distributed energy, demand response, and energy intelligence ensures our customers minimize their energy costs, maximize efficiencies, enhance power system reliability, and help develop a sustainable energy future.

